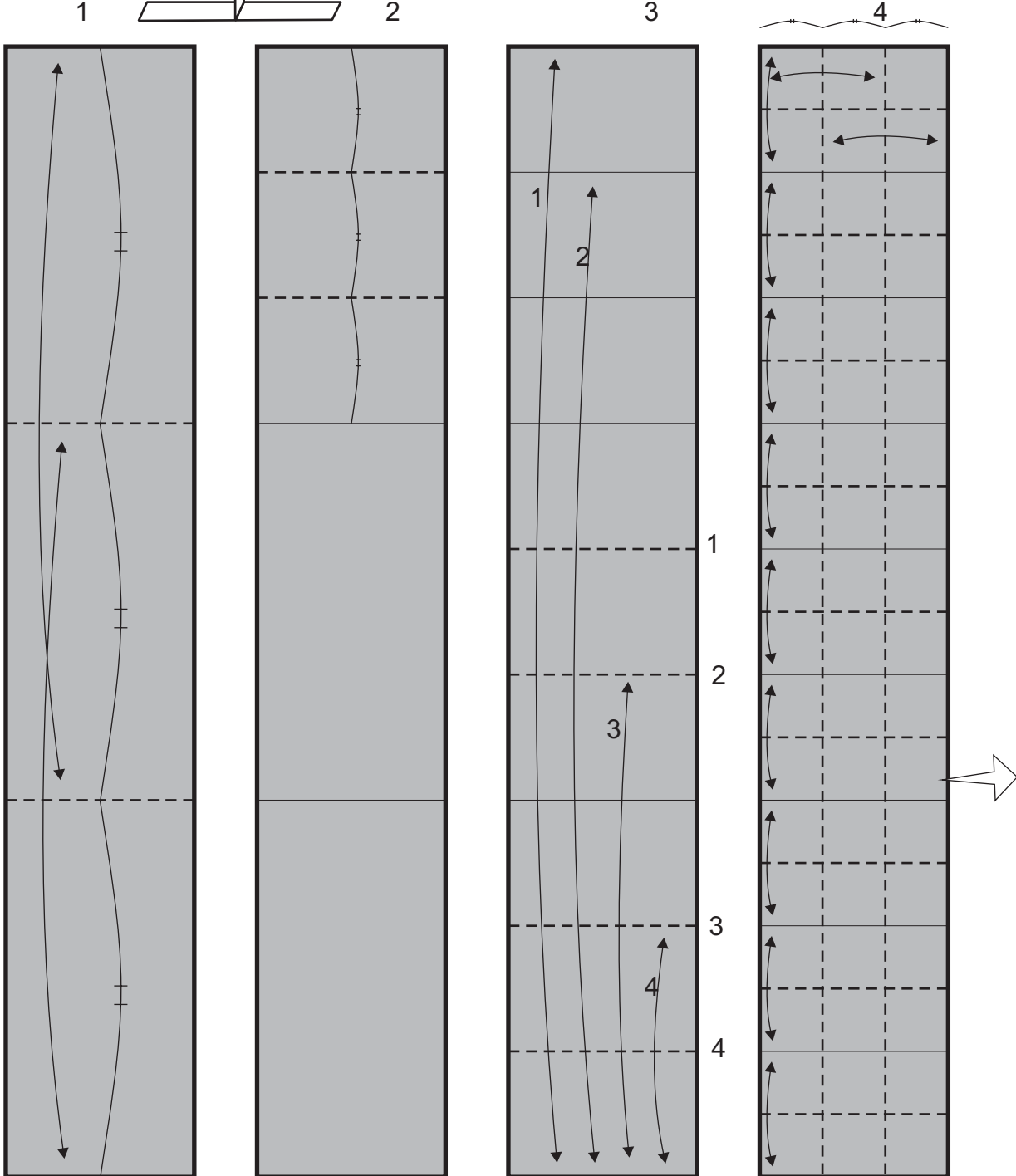


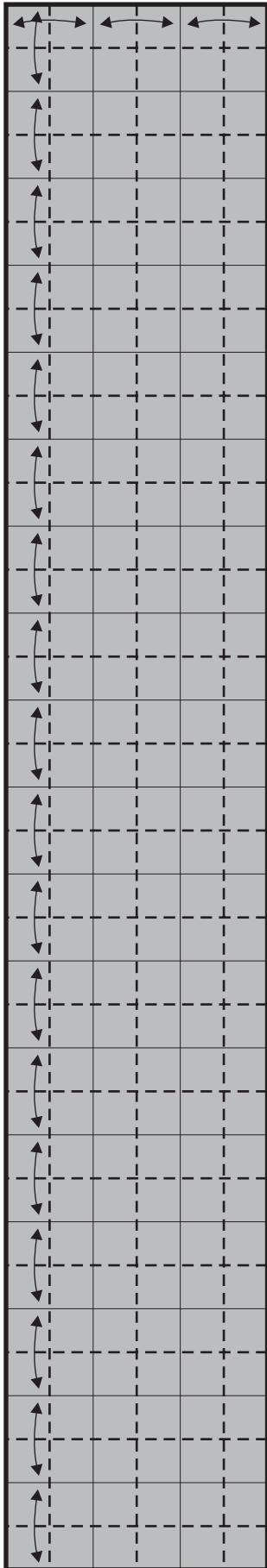
# Salto in alto di P. D'Auria

<http://www.origamidauria.it>

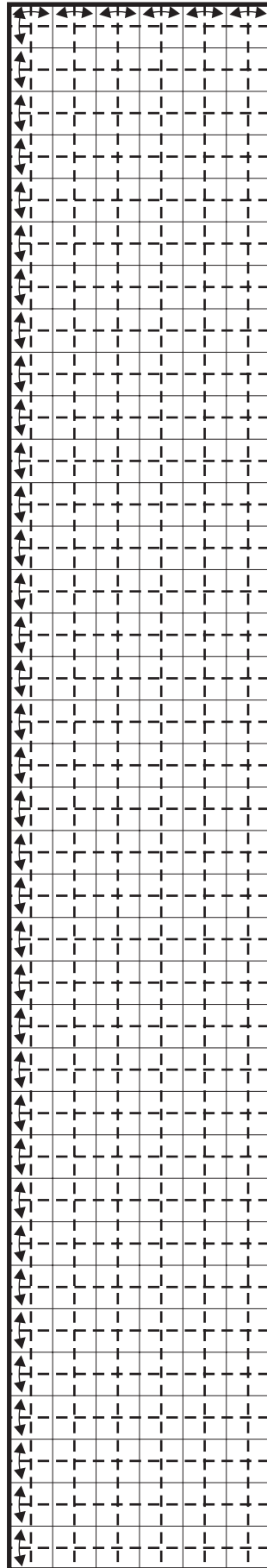
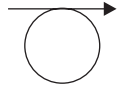
iniziare con un rettangolo 1X6  
usare carta metallizzata



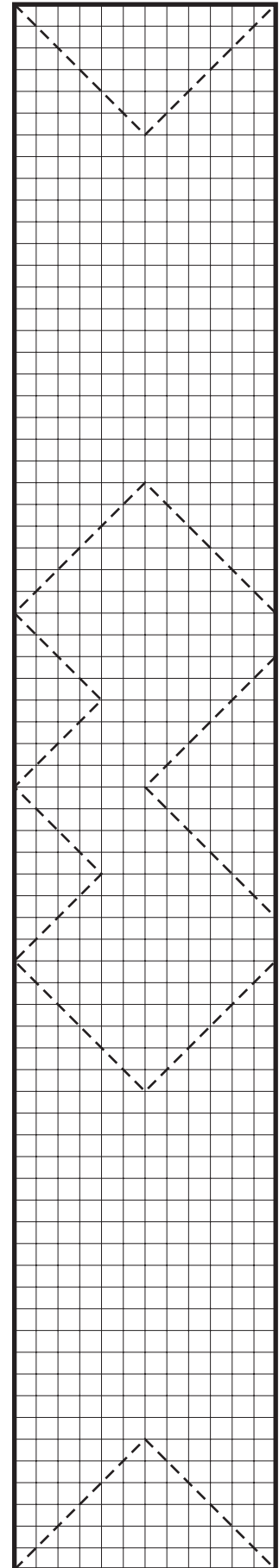
5

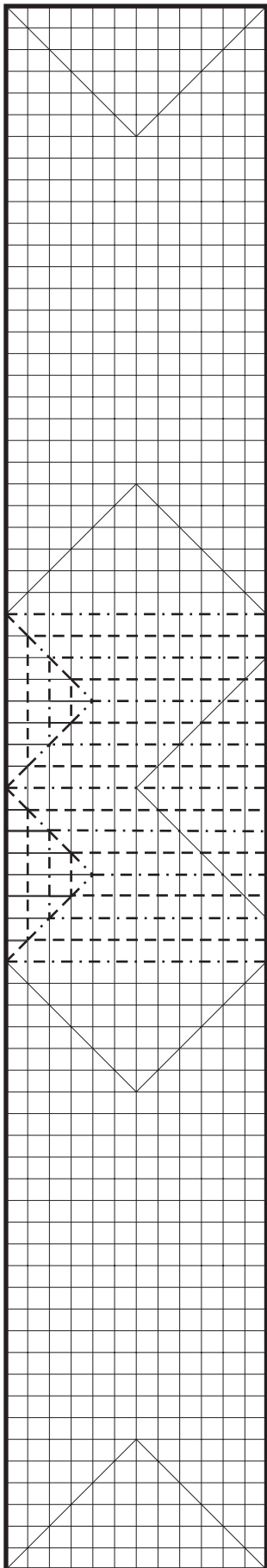


6 abbiamo diviso il foglio in 12x72



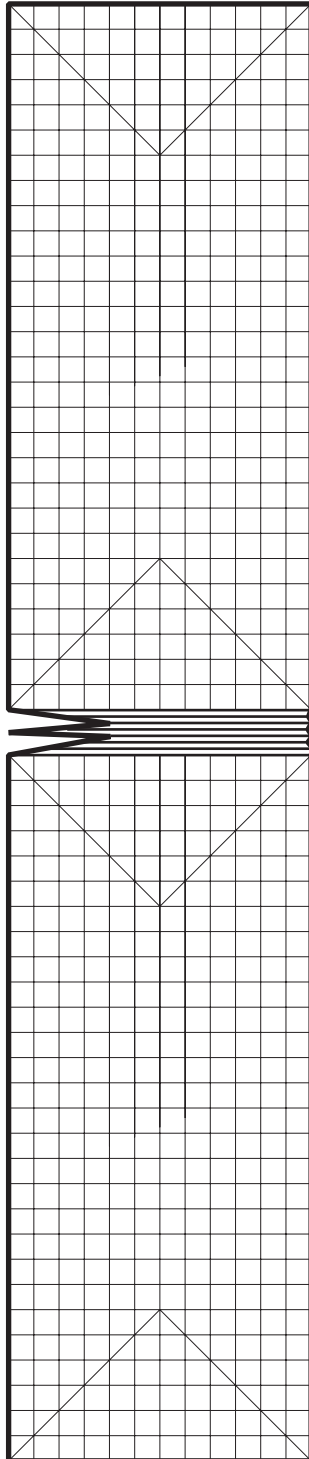
7



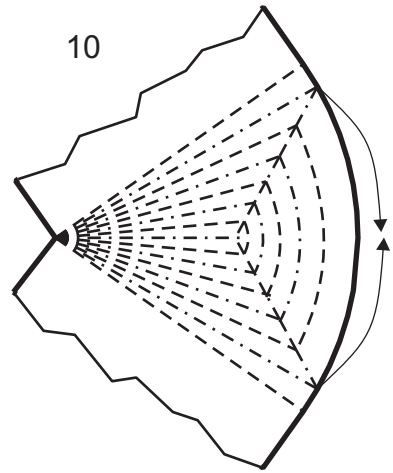


8

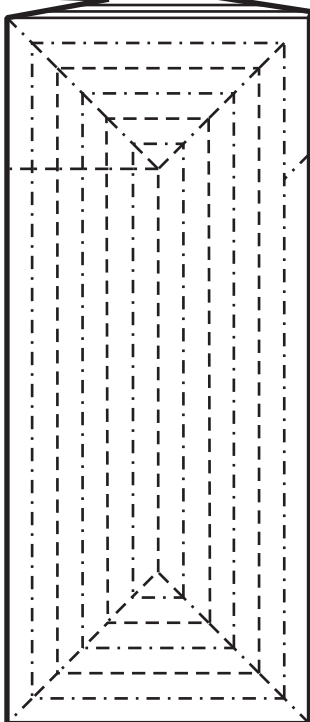
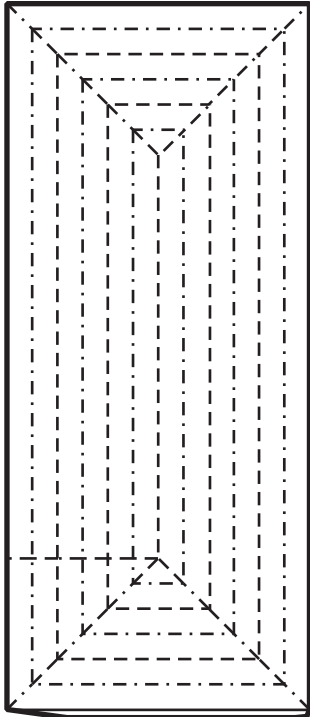
9 aprire quanto basta  
per dividere le due gambe



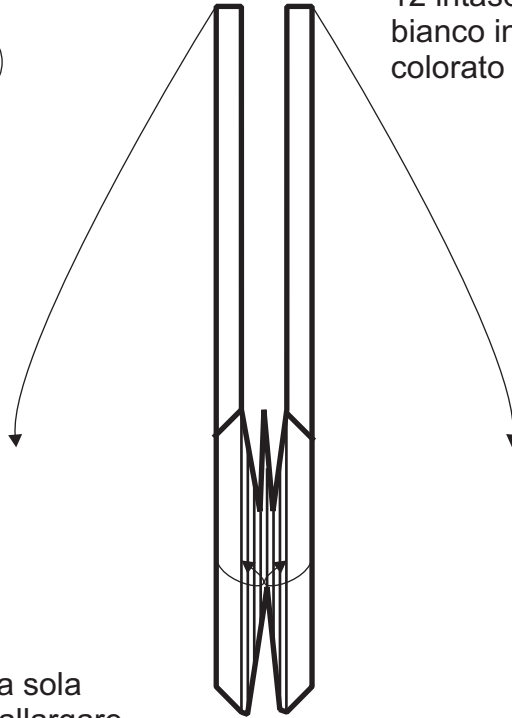
10



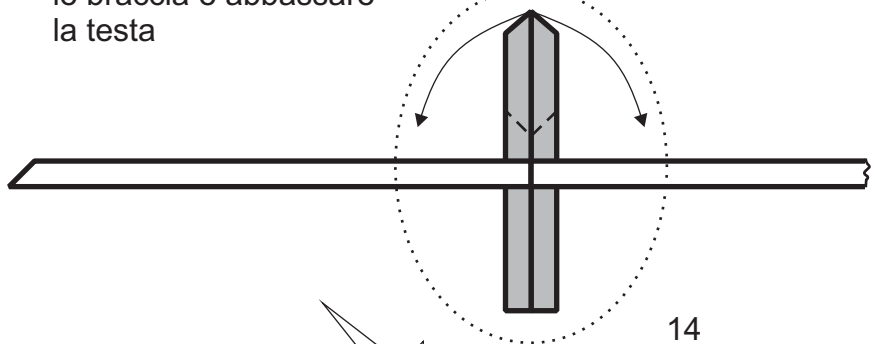
11 le pieghe sono invertite per cambiare il colore dell'asta e dei pilastrini



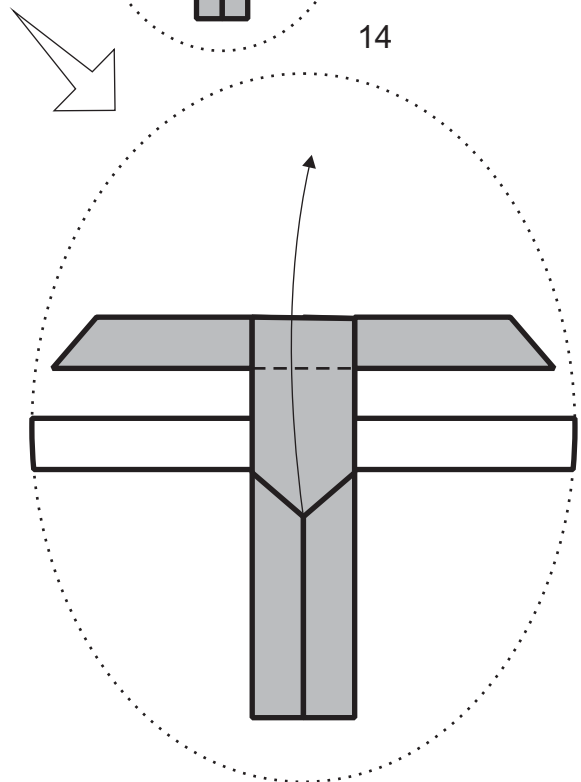
12 intascare lo strato bianco in quello colorato

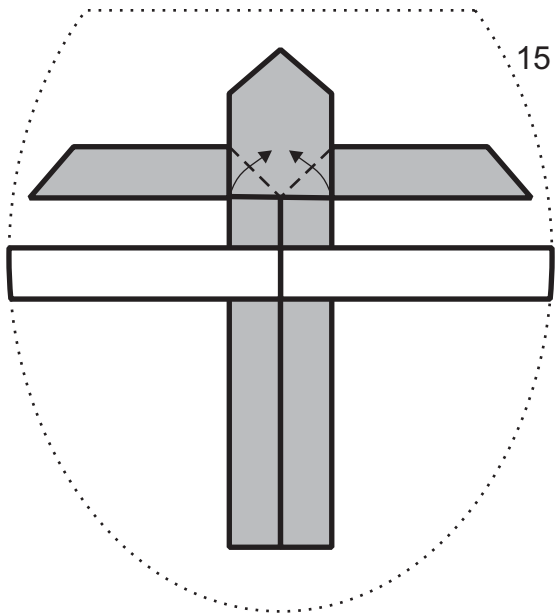


13 con una sola manovra, allargare le braccia e abbassare la testa

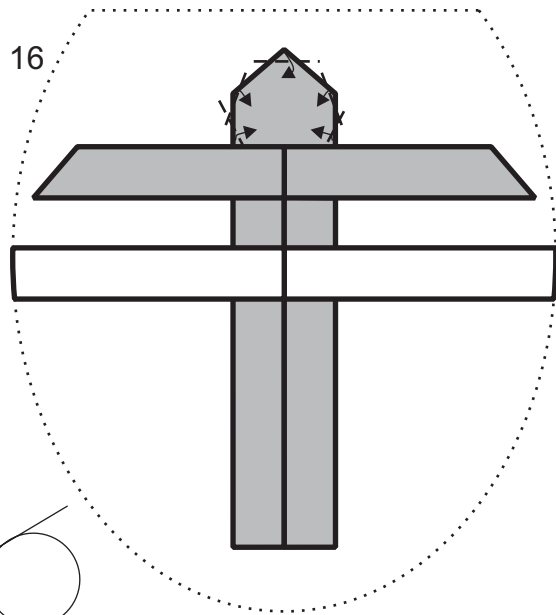


14

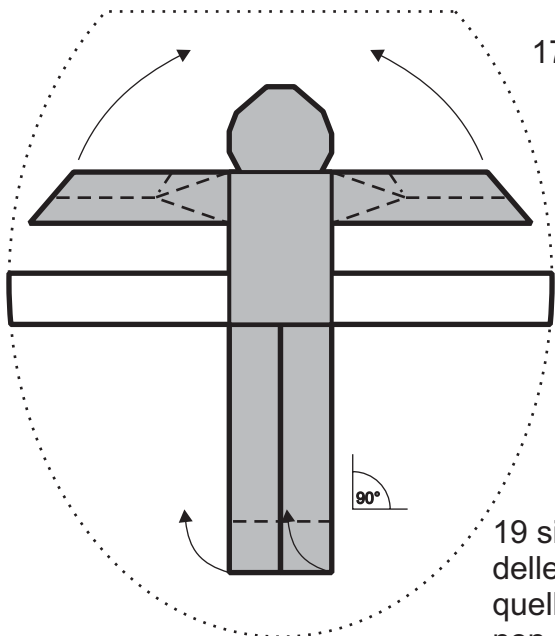
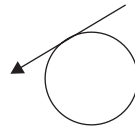




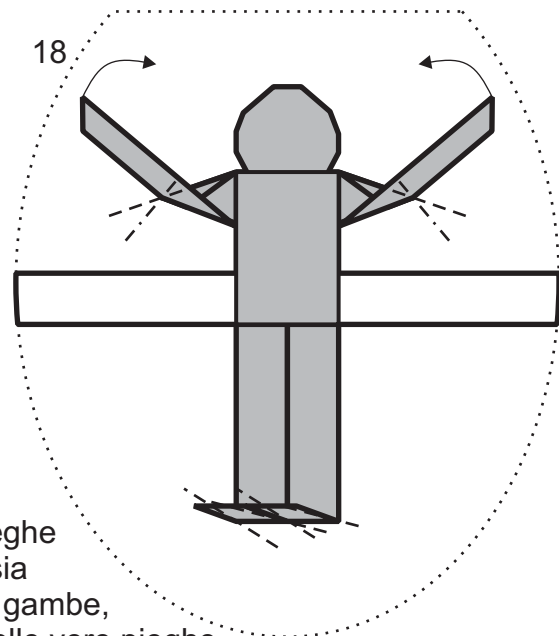
15



16

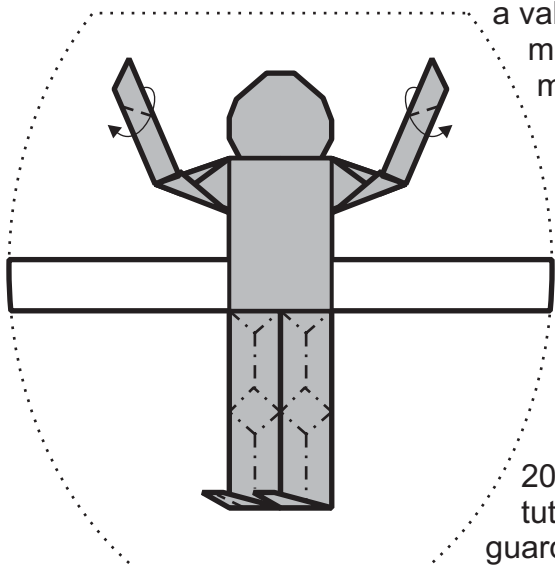


17



18

19 sia le pieghe delle mani sia quelle delle gambe, non sono delle vere pieghe a valle o a monte, ma sono un modellare la carta



20 modellare tutto il corpo, guardando una foto

