

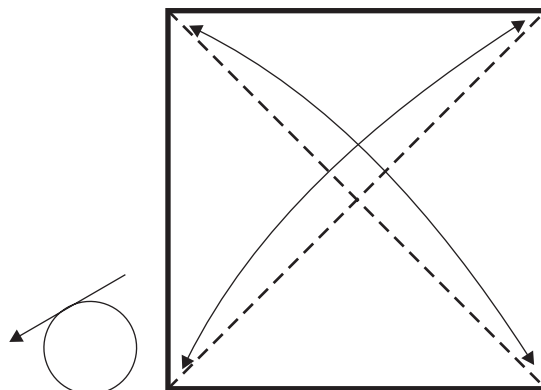


Albero di P. D'Auria

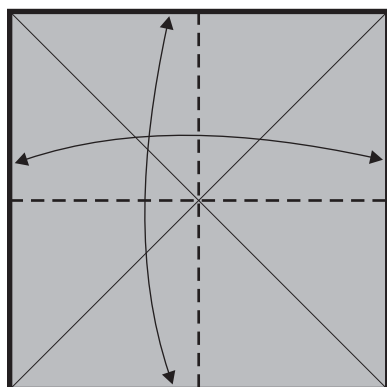
<http://www.origamidauria.it>

Usare un foglio quadrato con il lato di almeno 50 cm di carta metallizzata.

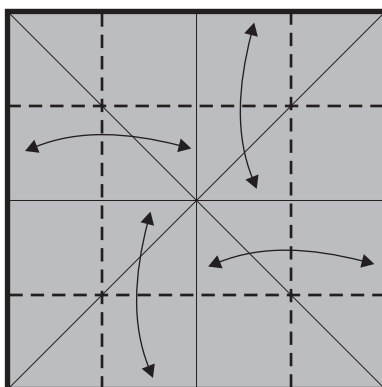
1



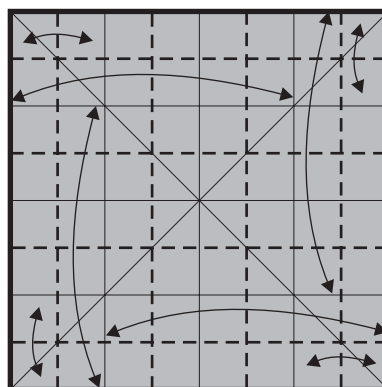
2



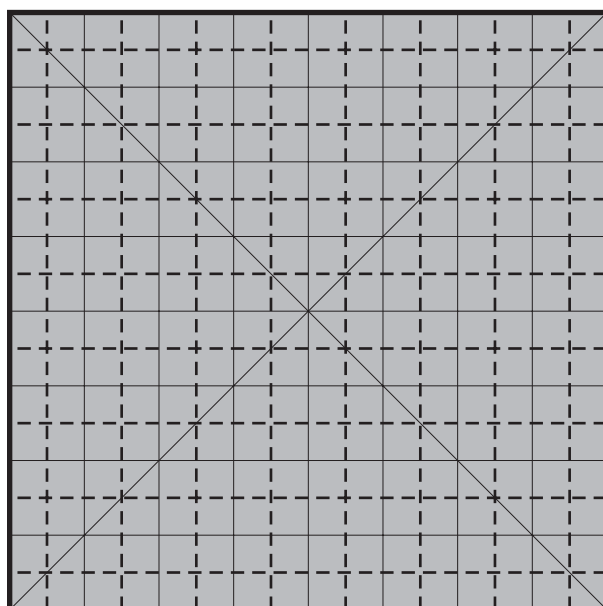
3



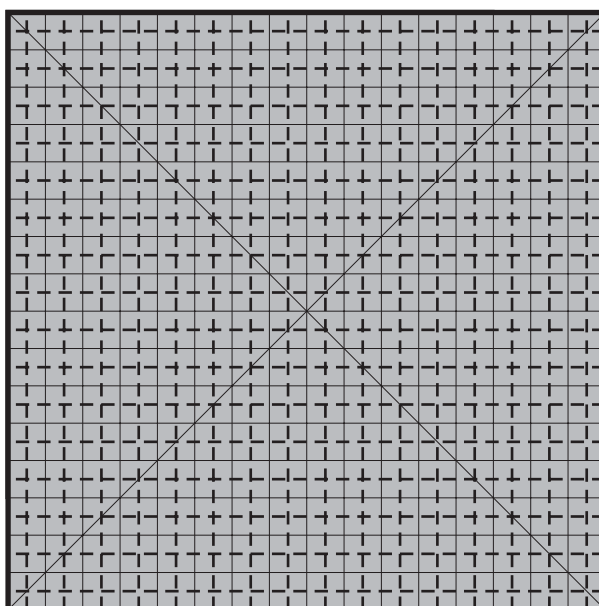
4

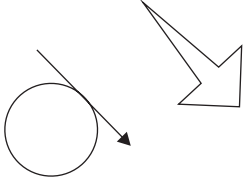


5

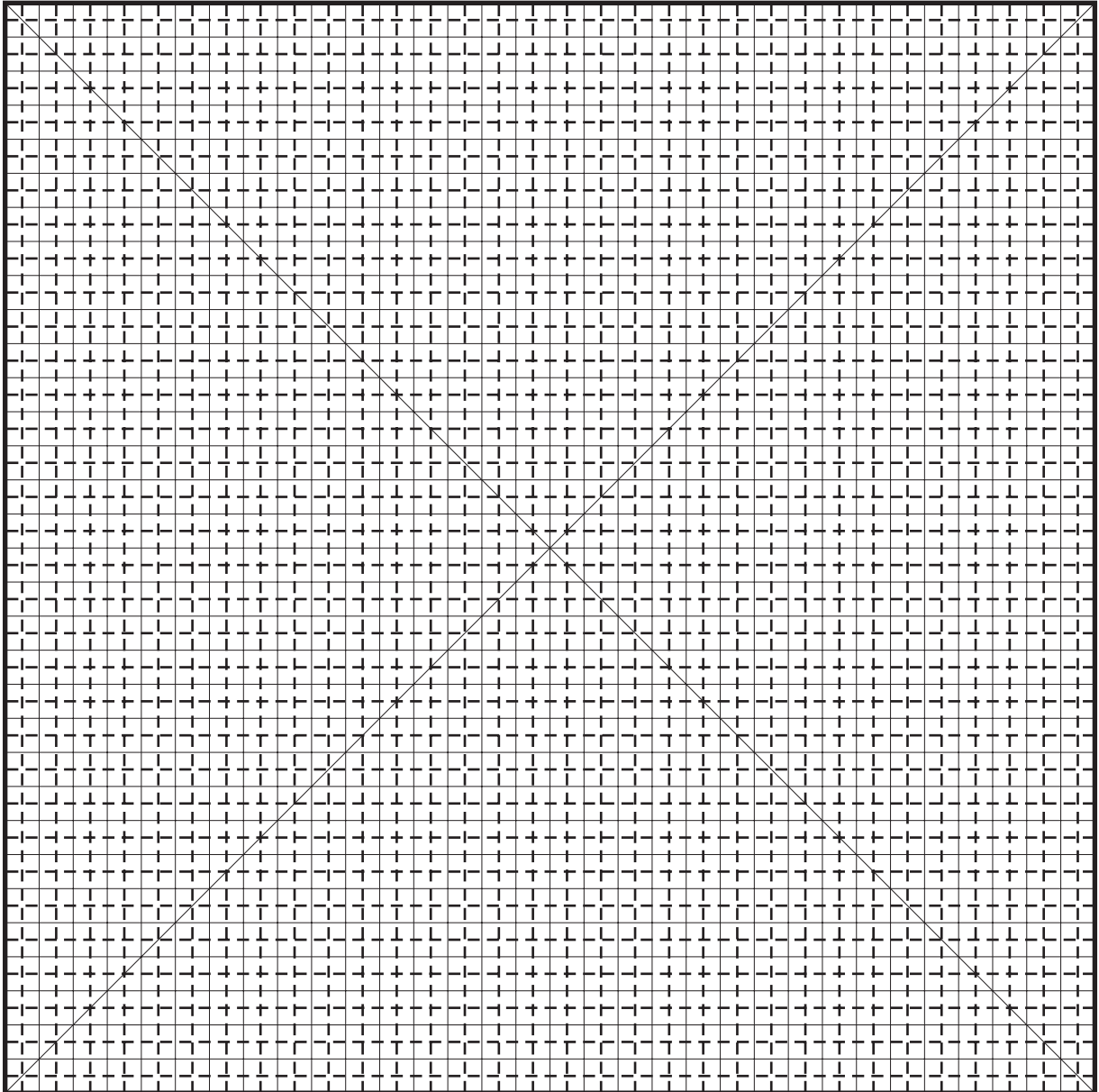


6

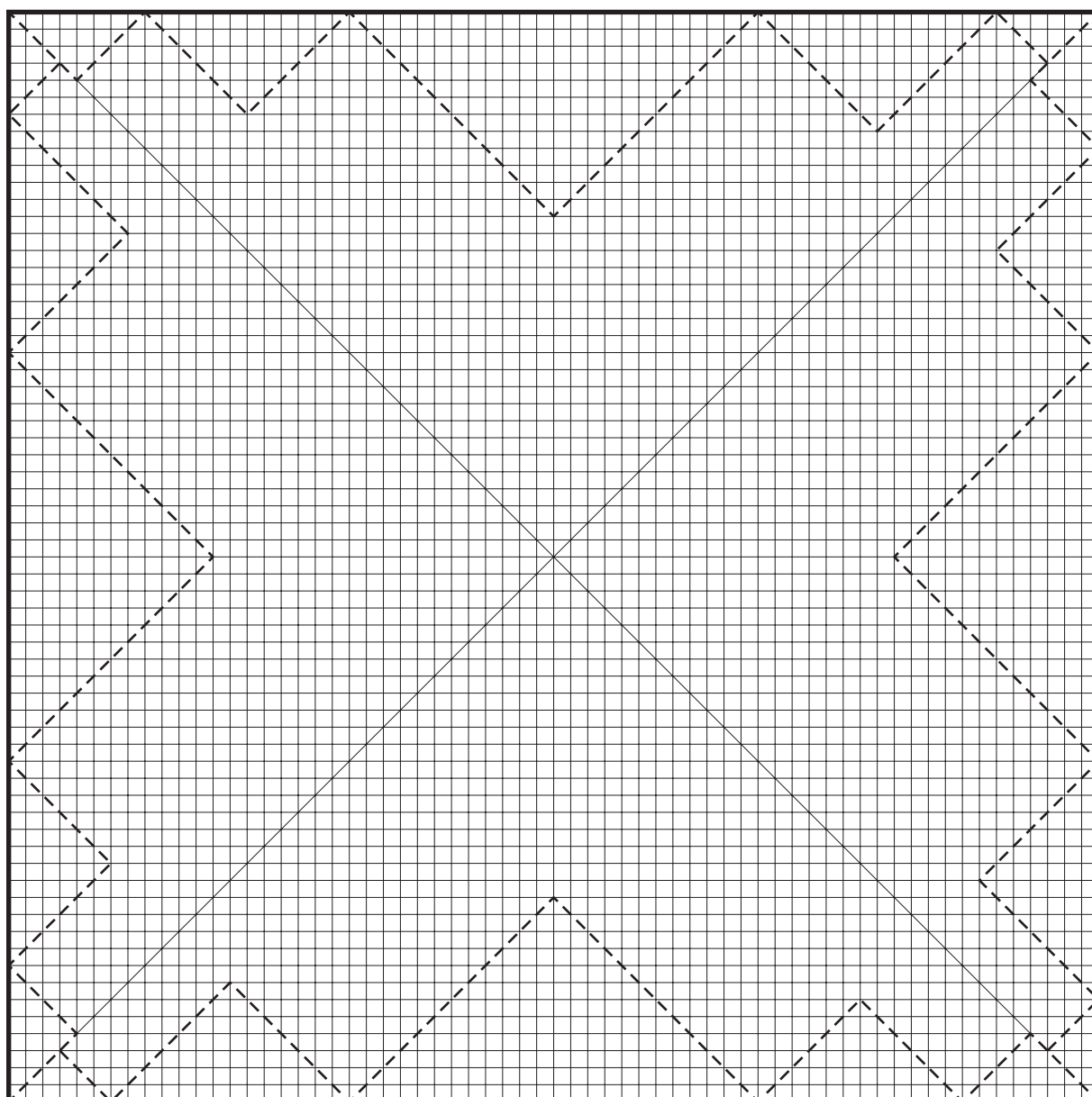


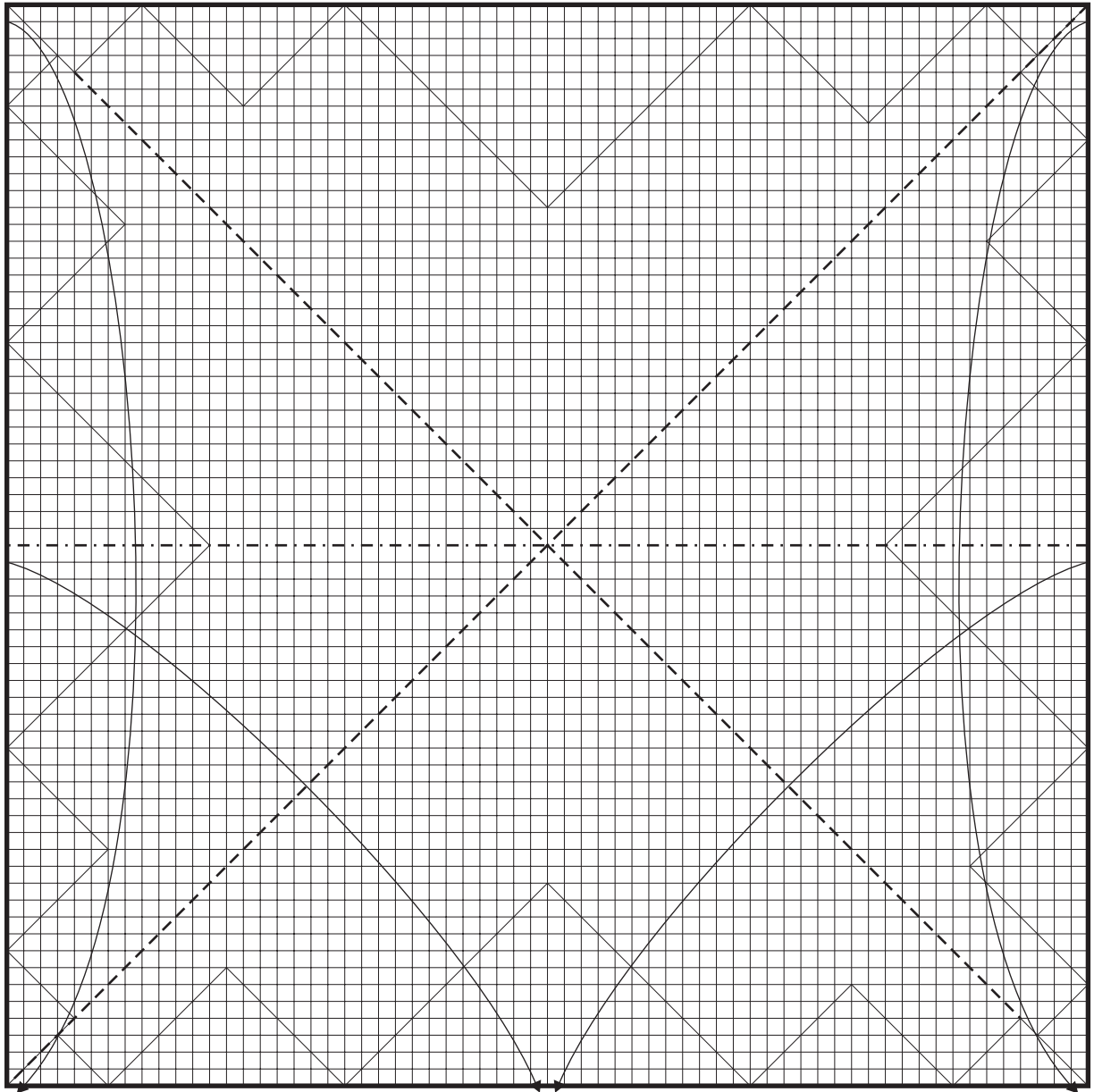


7 abbiamo piegato il foglio in 64x64.



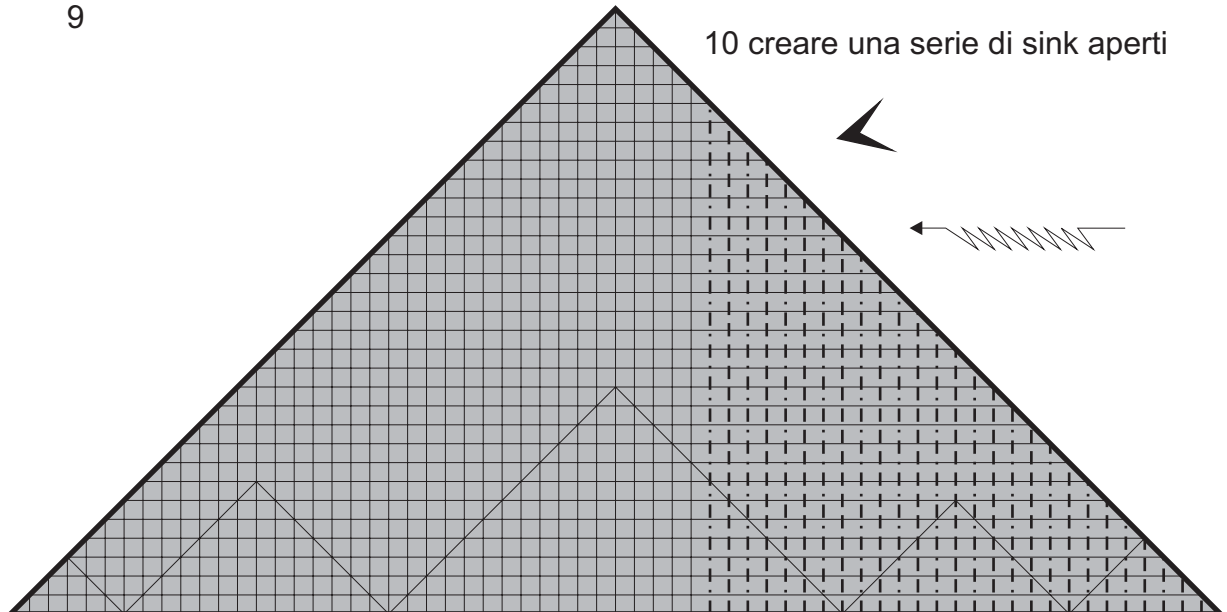
8 queste sono prepieghe utili per creare i rami

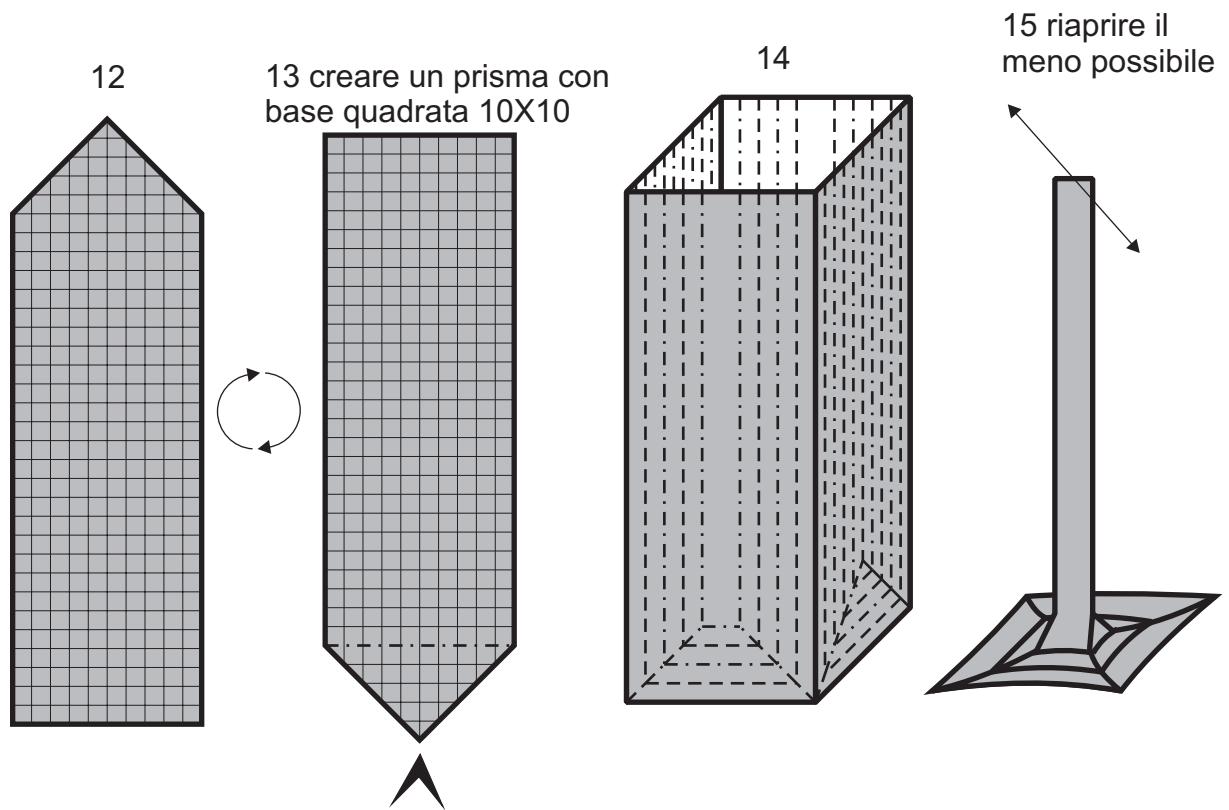
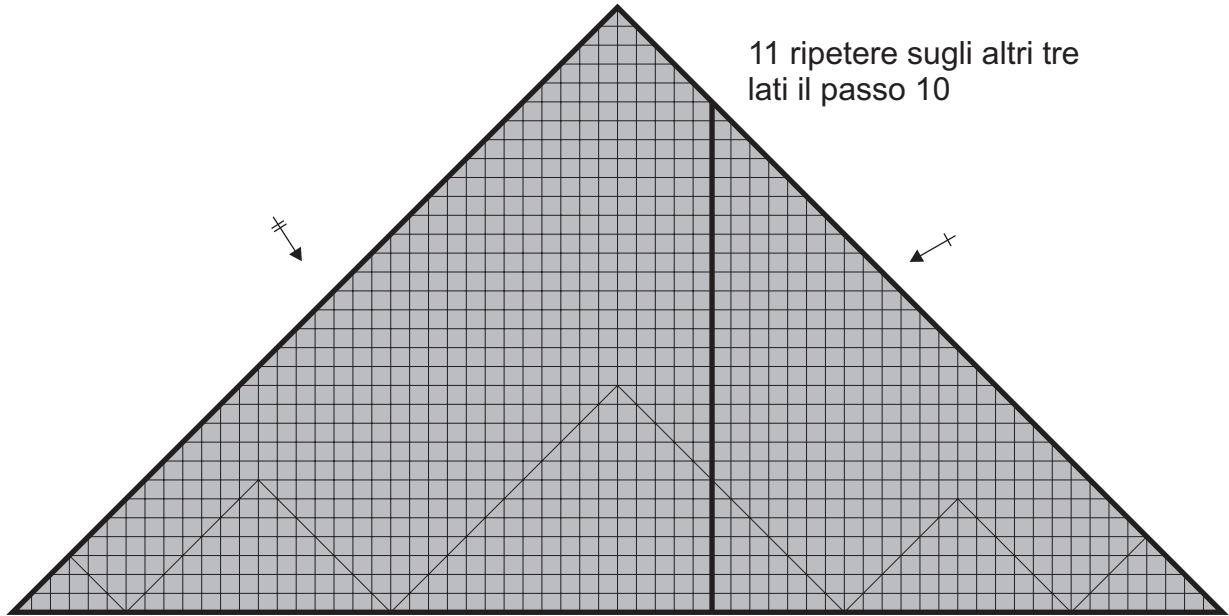


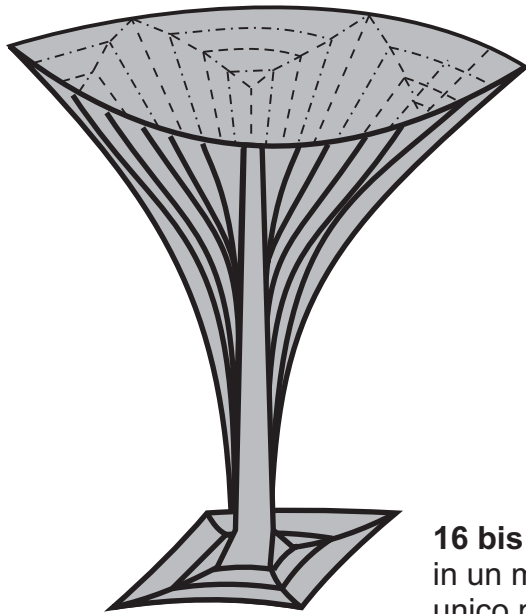


9

10 creare una serie di sink aperti

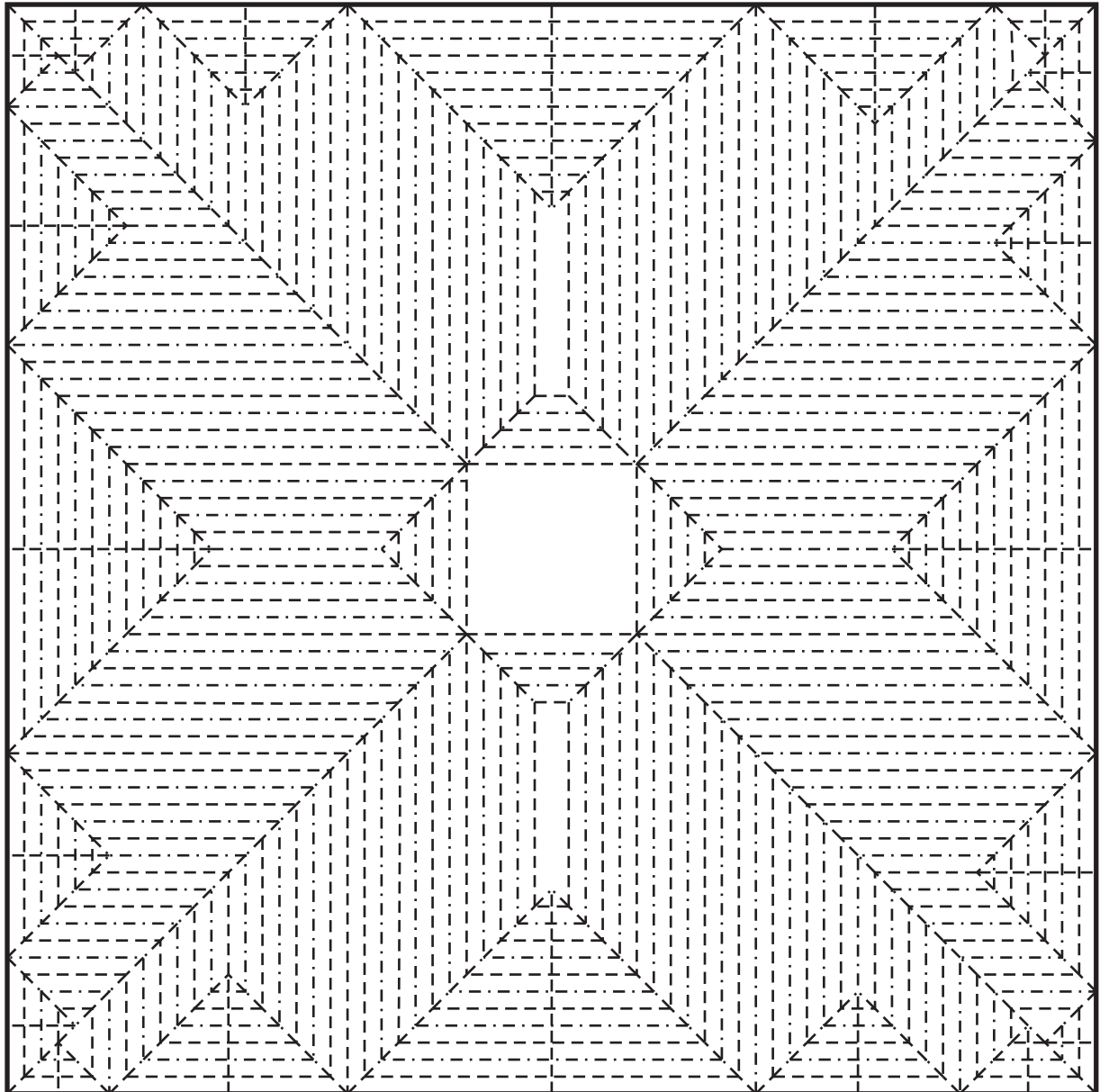




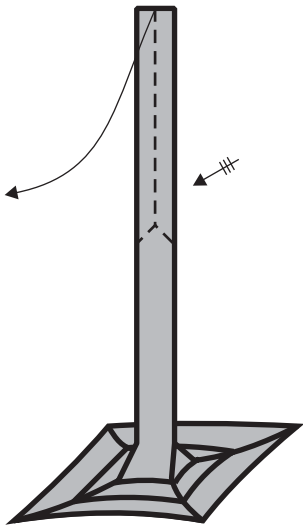


16 creare tutti i rami
(questa figura è semplificata)

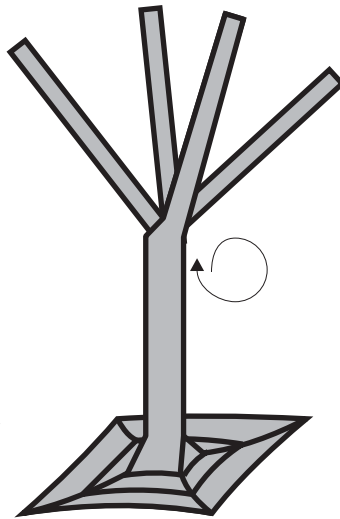
16 bis in pratica con i passi 9-16 stiamo riproducendo
in un modo più semplice le pieghe riprodotte in questo
unico passo (più difficile)



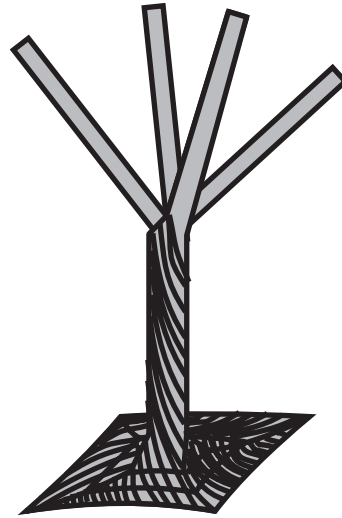
17 assottigliare e allontanare i 4 rami principali



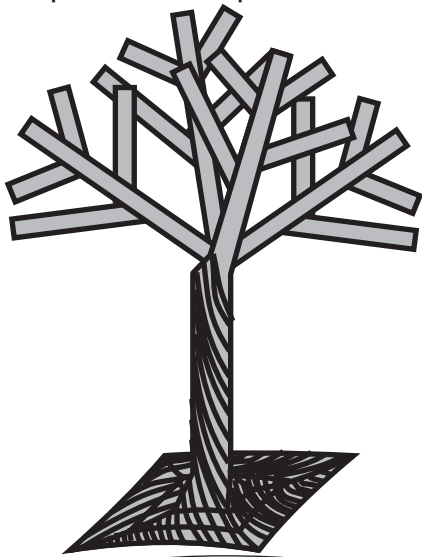
18 fare una rotazione sul tronco



19 separare tutti i rami



20 modellare tutti i rami e le radici per renderlo il più realistico possibile.



21 ho messo una foto per far capire meglio come deve essere modellato.



Neo laureato in agraria:
<cosa risponderesti se ti dicessi che quell'albero può produrre due quintali di mele?>.

Contadino:<direi che è un miracolo..... perché quello è un alberodi pere!!!>.