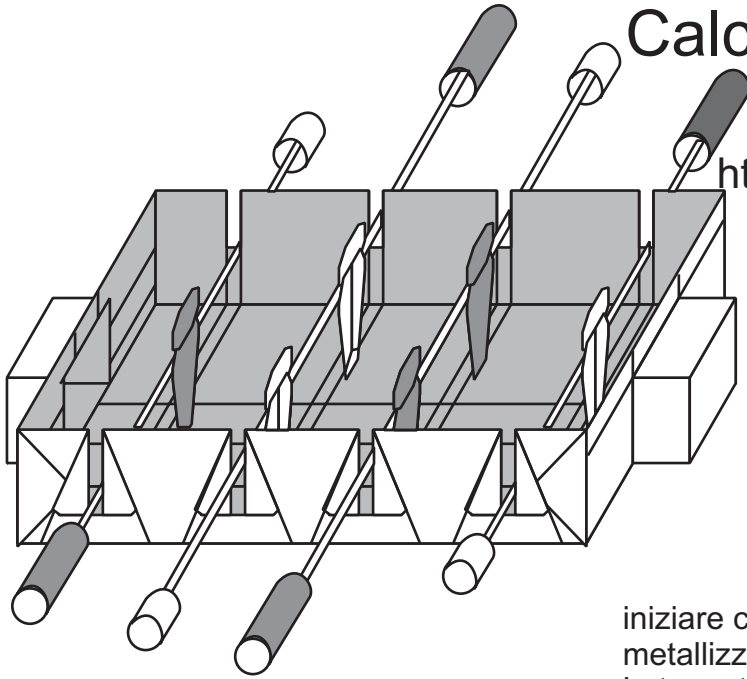


Calcetto con stecche

di P. D'Auria

<http://www.origamidauria.it>



usare carta metallizzata,
per il campo usare una
con una grammatura più alta.

campo

iniziare con un rettangolo 6X17, con il lato
metallizzata argento e l'altro verde.
Lato metallizzato sopra.

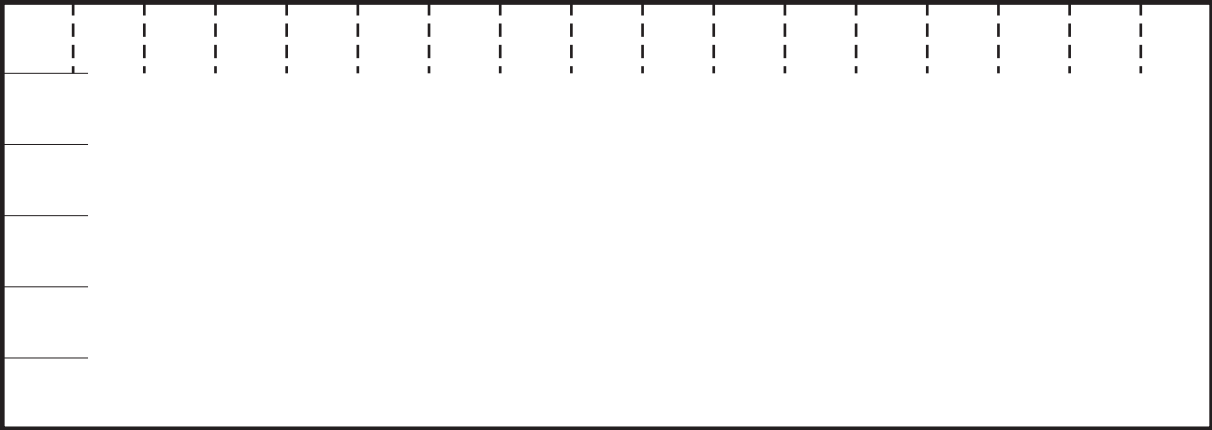
1 dividere in terzi il lato corto,
segnando solo sul lato



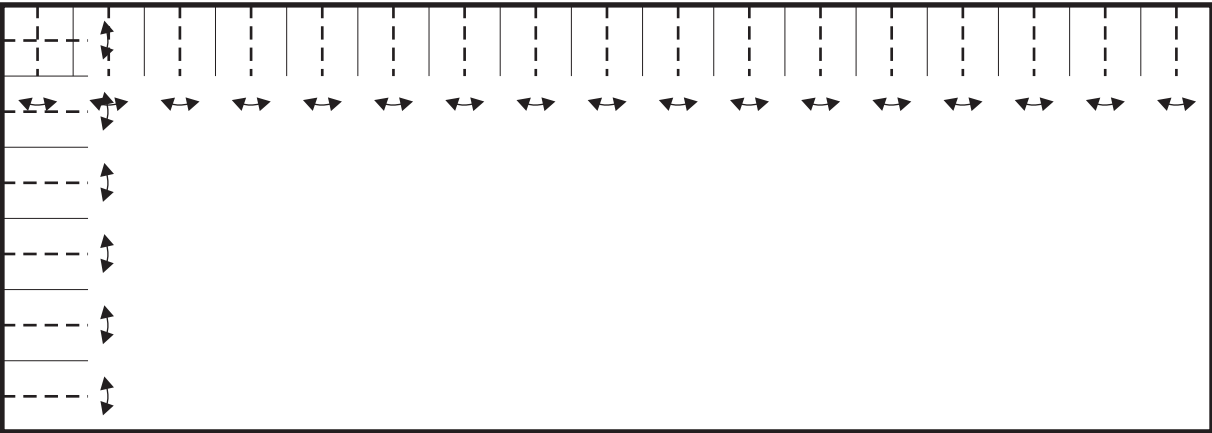
2



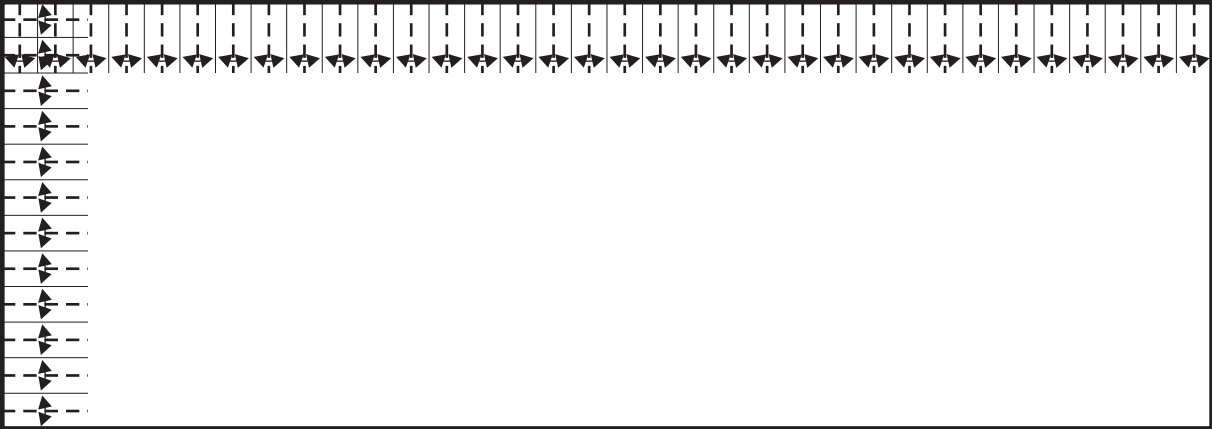
3 dividere in 17esimi il lato lungo,
segnando solo sul lato



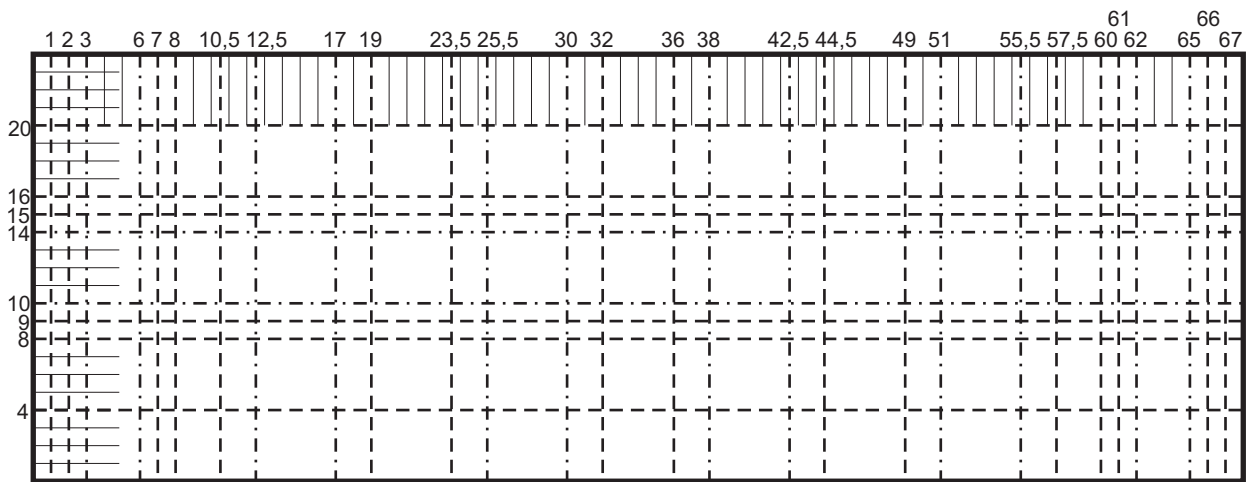
4



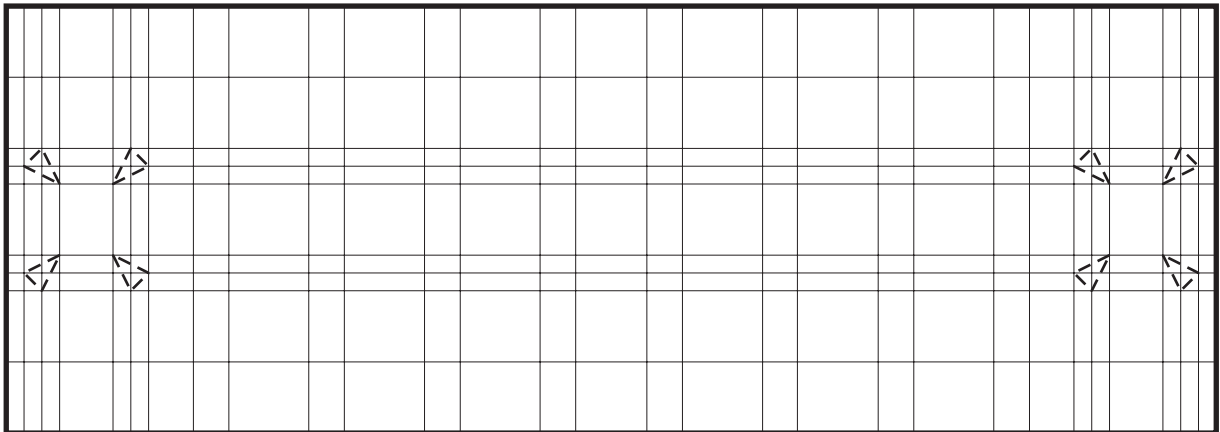
5 abbiamo diviso il rettangolo in 24X68



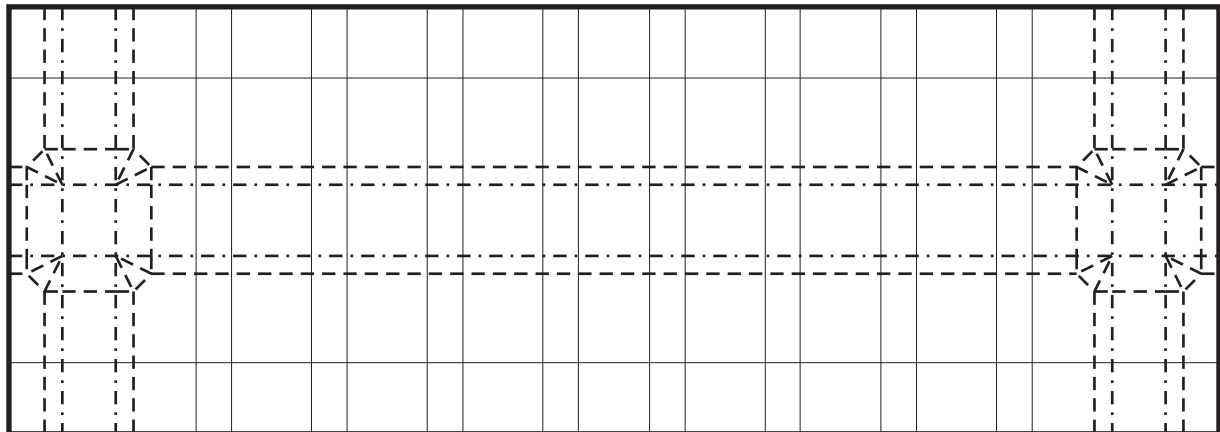
6

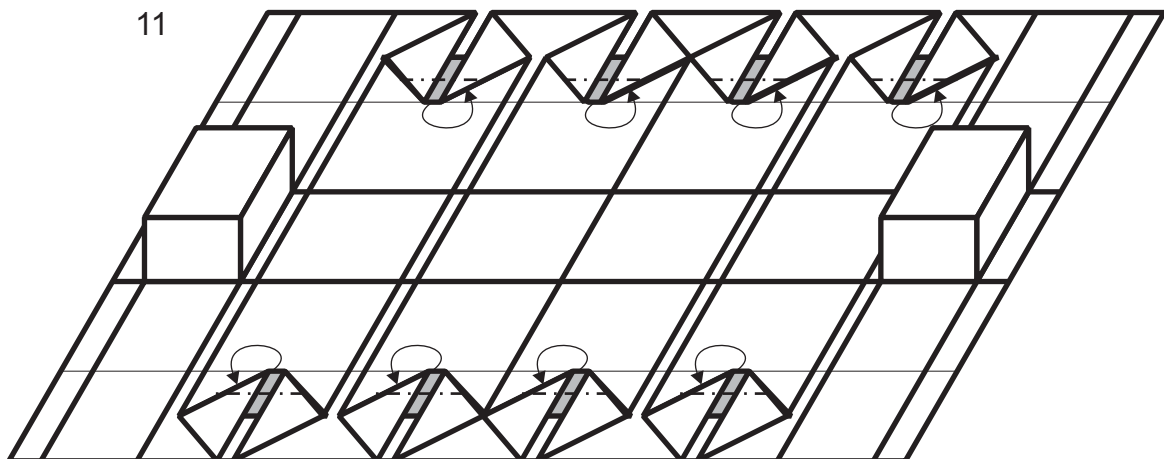
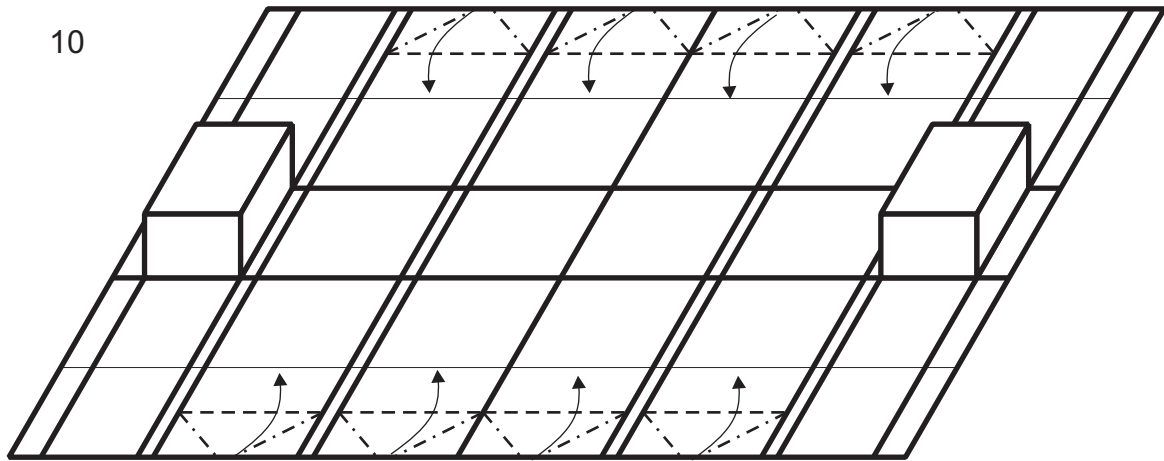
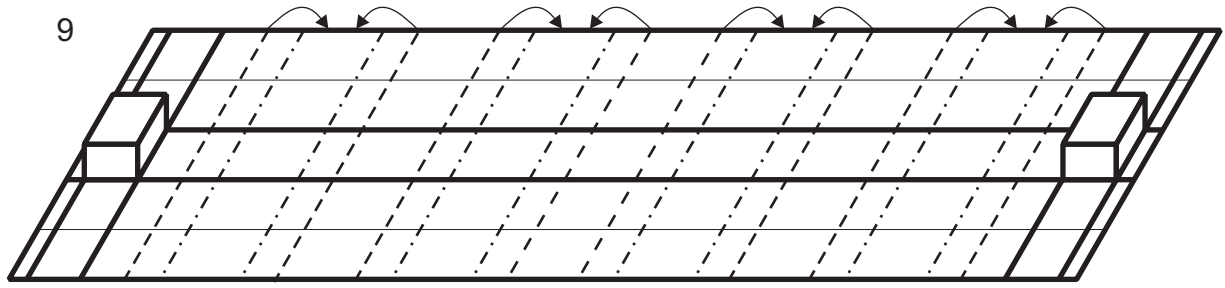


7

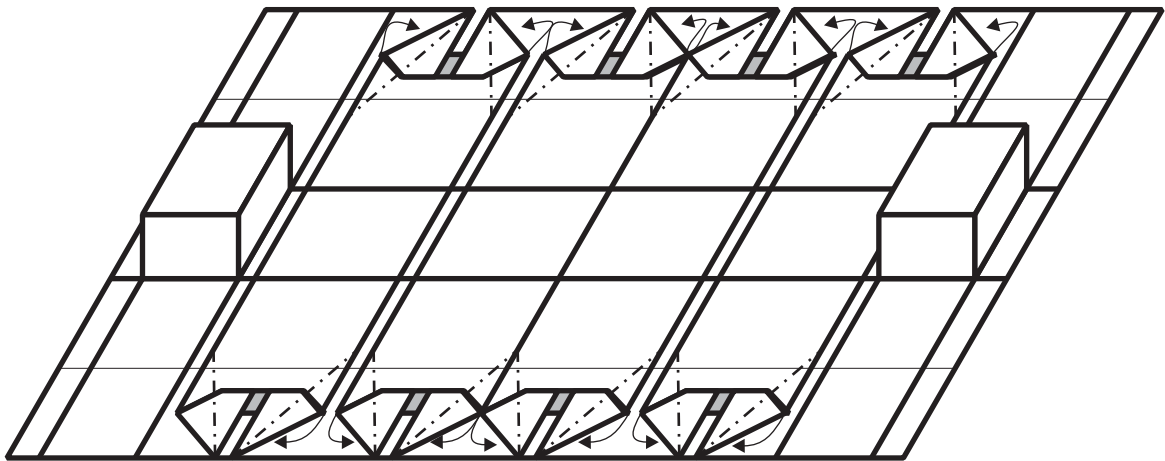


8

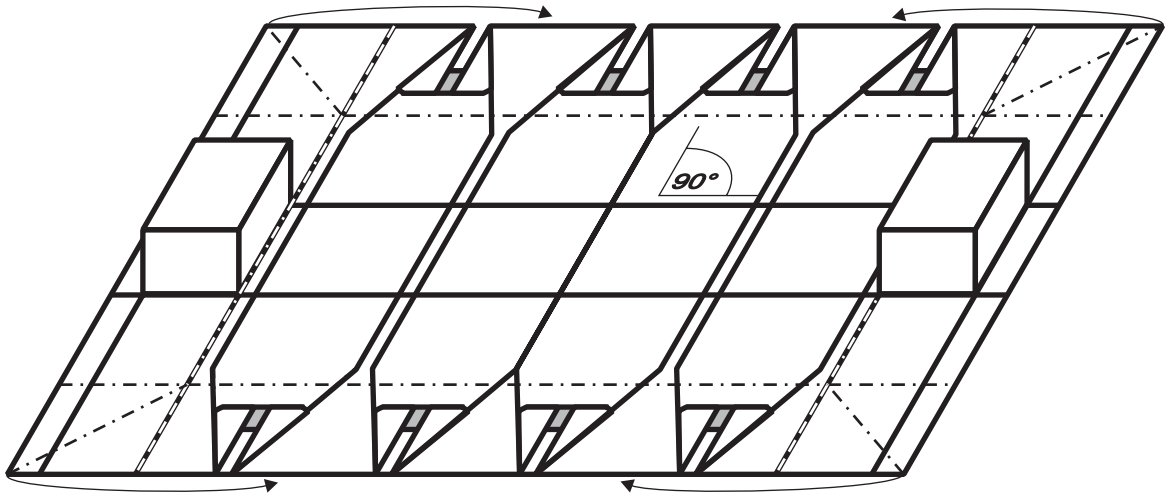




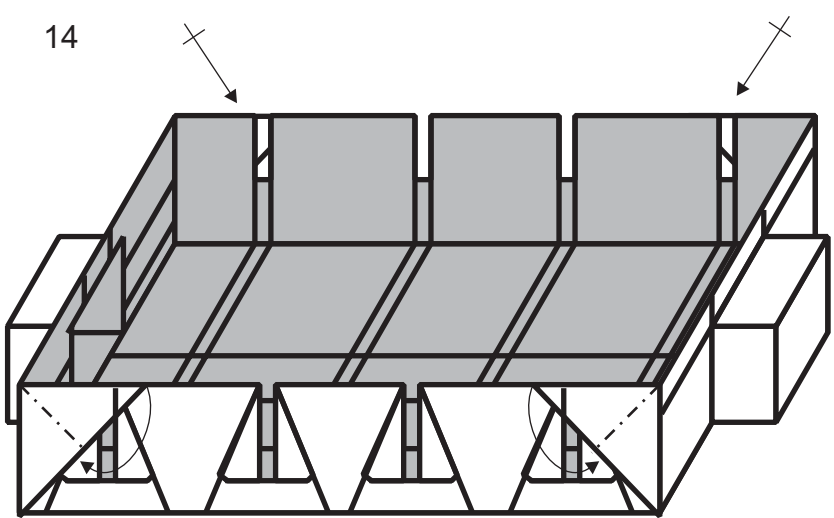
12

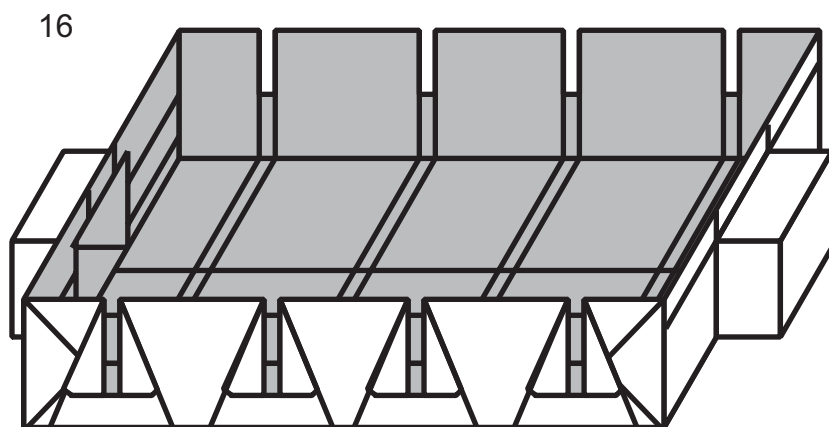
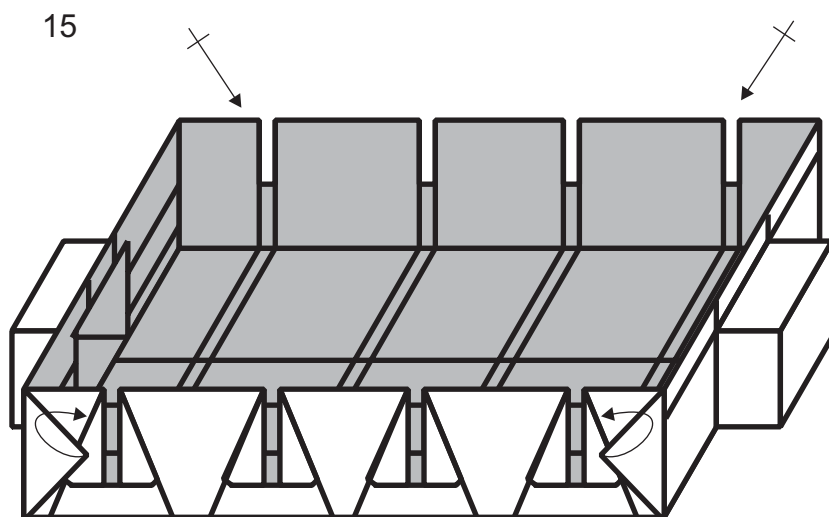


13



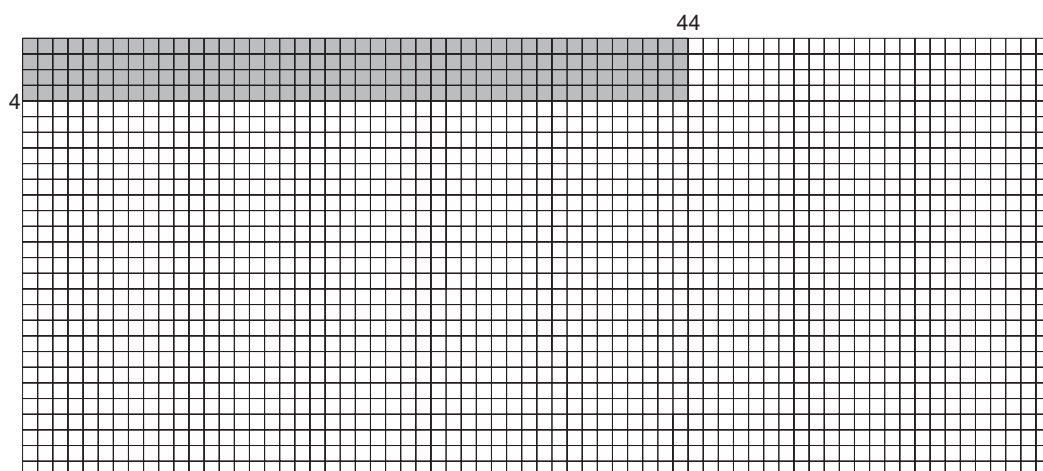
14





Portiere

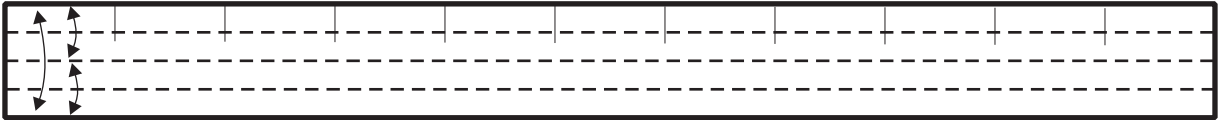
iniziare con un rettangolo 1X11.
Lato metallizzato sopra.



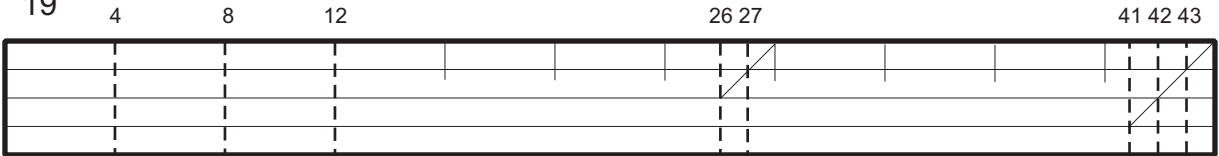
17



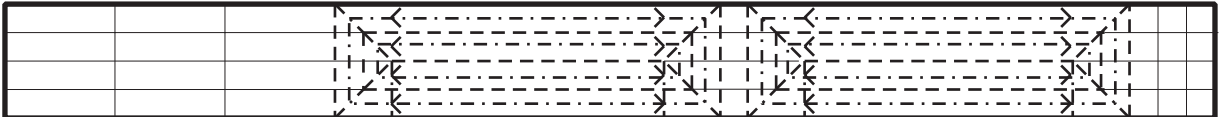
18



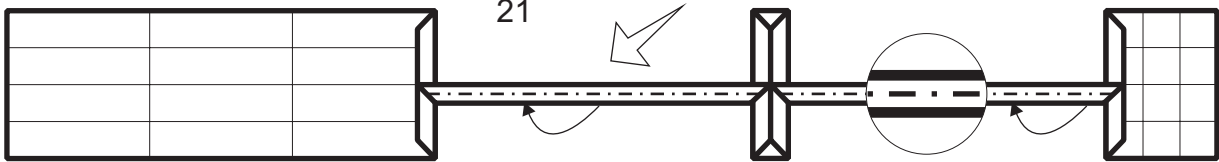
19



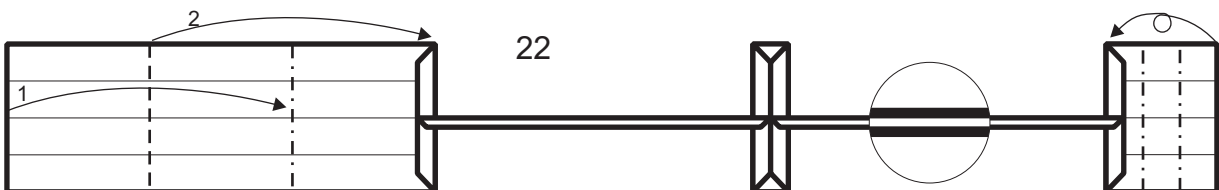
20

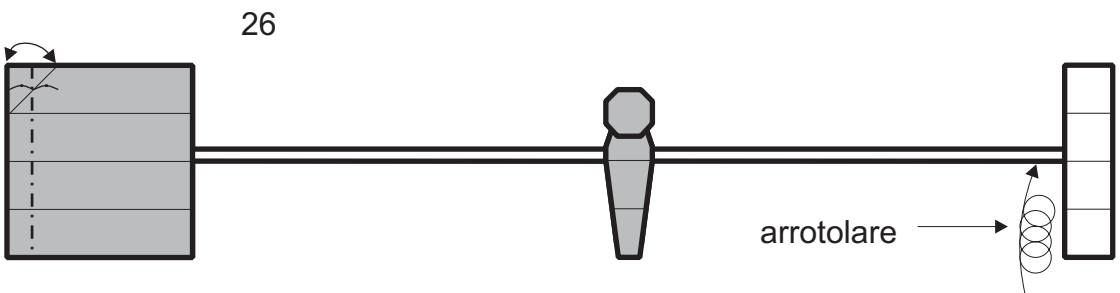
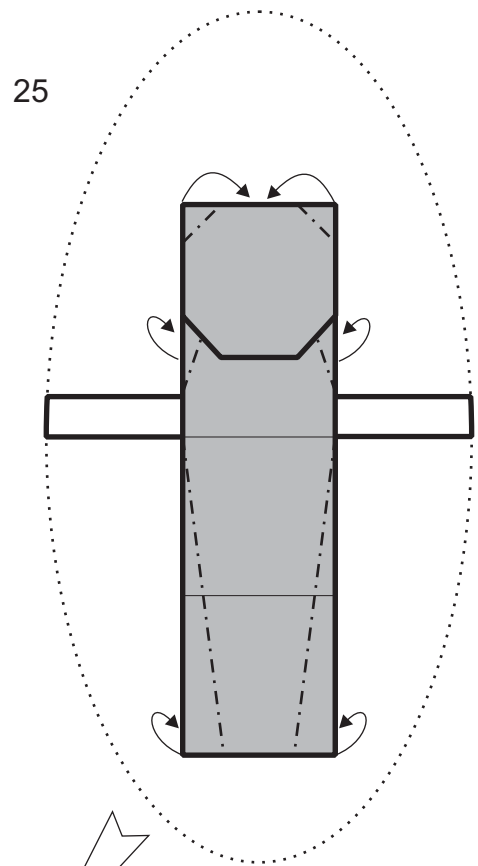
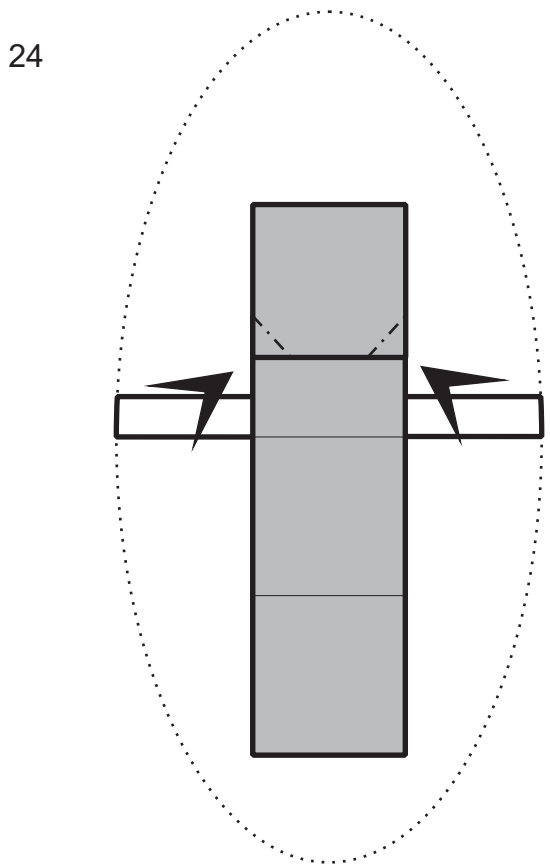
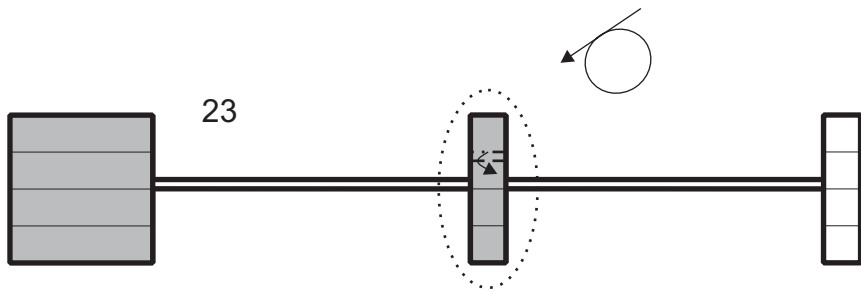


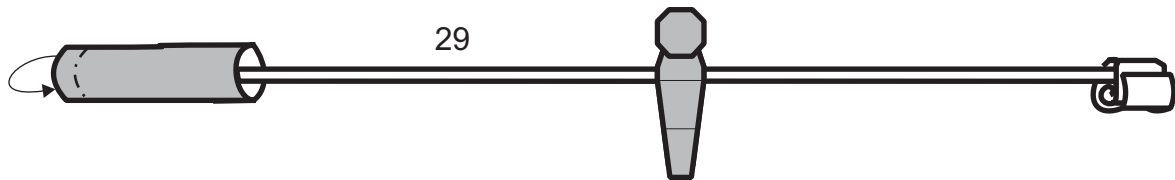
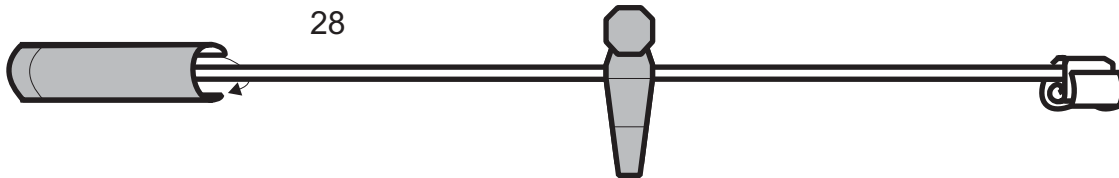
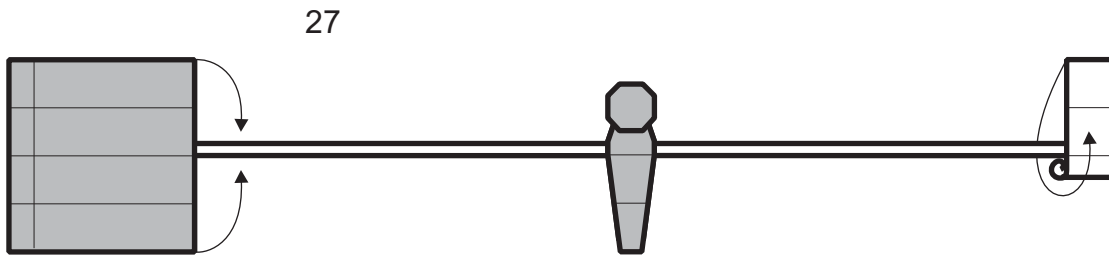
21



22

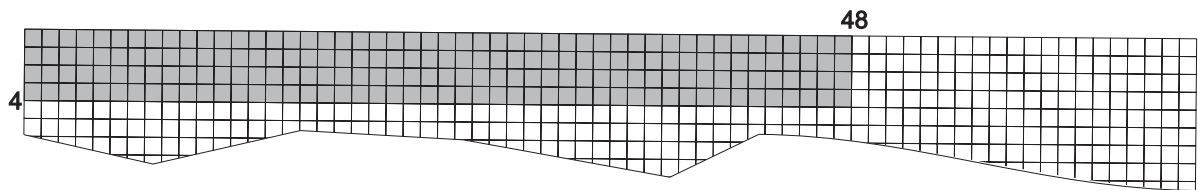




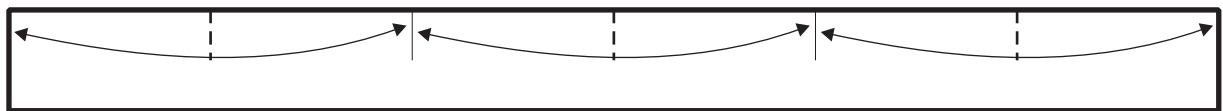


Giocatori

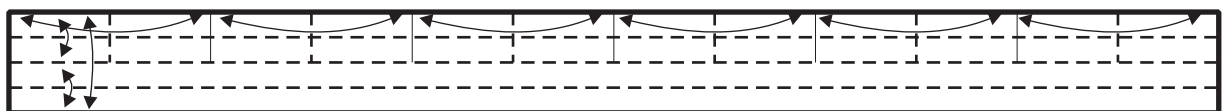
iniziare con un rettangolo 1X12. Lato metallizzato sopra.



30



31





33 continuare dal passo 20 fino al passo 29 del portiere, con la differenza che questa volta creeremo due figure.



34



quei dolori ossei, di vostro marito, potrebbero essere dovuti alla mancanza di calcio...

dottore, non è possibile, il calcio e il calcetto non se li fa mancare!!!

